



## 6 Monkspath Hall Road Solihull, B91 3DN

This immaculately presented unfurnished 2 bedroomed ground floor apartment is part of a well-regarded development, offering not just a beautiful home but also an ideal location as it is within walking distance of Solihull Town Centre.

For leisure and outdoor activities, Tudor Grange Leisure Centre and Park are conveniently close by, providing residents with opportunities for recreation, exercise, and enjoying green spaces in the vicinity.

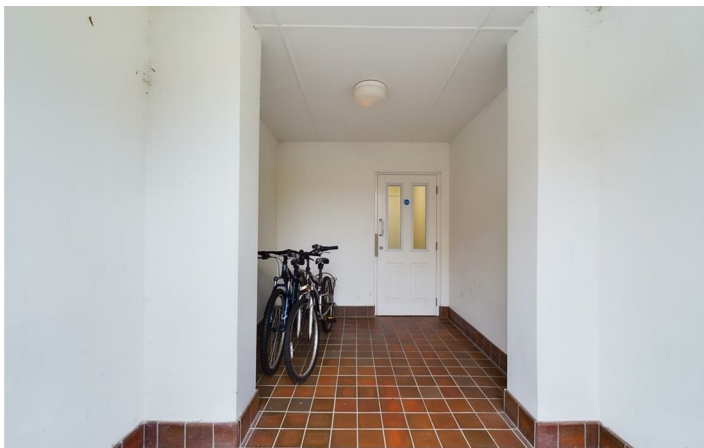
Solihull Town Centre hosts the renowned Touchwood complex offering residents easy access to upscale retail, dining, and entertainment options including a multi screen cinema theatre and library.

The property is conveniently located just 0.5 miles away from Solihull Railway Station which offers smooth connectivity between Birmingham Snow Hill and London Marylebone.

£1,095 Per Month









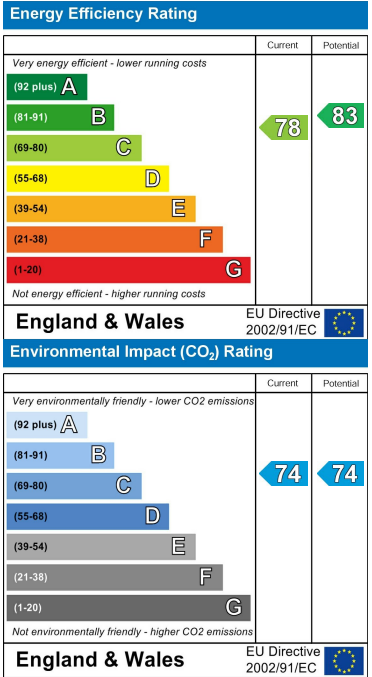
Floor Plan



Area Map



Energy Efficiency Graph



These particulars, whilst believed to be accurate are set out as a general outline only for guidance and do not constitute any part of an offer or contract. Intending purchasers should not rely on them as statements of representation of fact, but must satisfy themselves by inspection or otherwise as to their accuracy. No person in this firms employment has the authority to make or give any representation or warranty in respect of the property.